

A large offshore oil rig is shown at sea under a dramatic, cloudy sky. The rig's complex steel structure, including a tall derrick and various platforms, is illuminated by warm lights. The ocean is dark and textured. In the background, faint white contour lines are overlaid on the sky and sea.

Drilling 10 km wells on Brage

Ørjan Johannessen, VP D&W, OKEA ASA

Stavanger, April 2025

Delivering in line with growth strategy

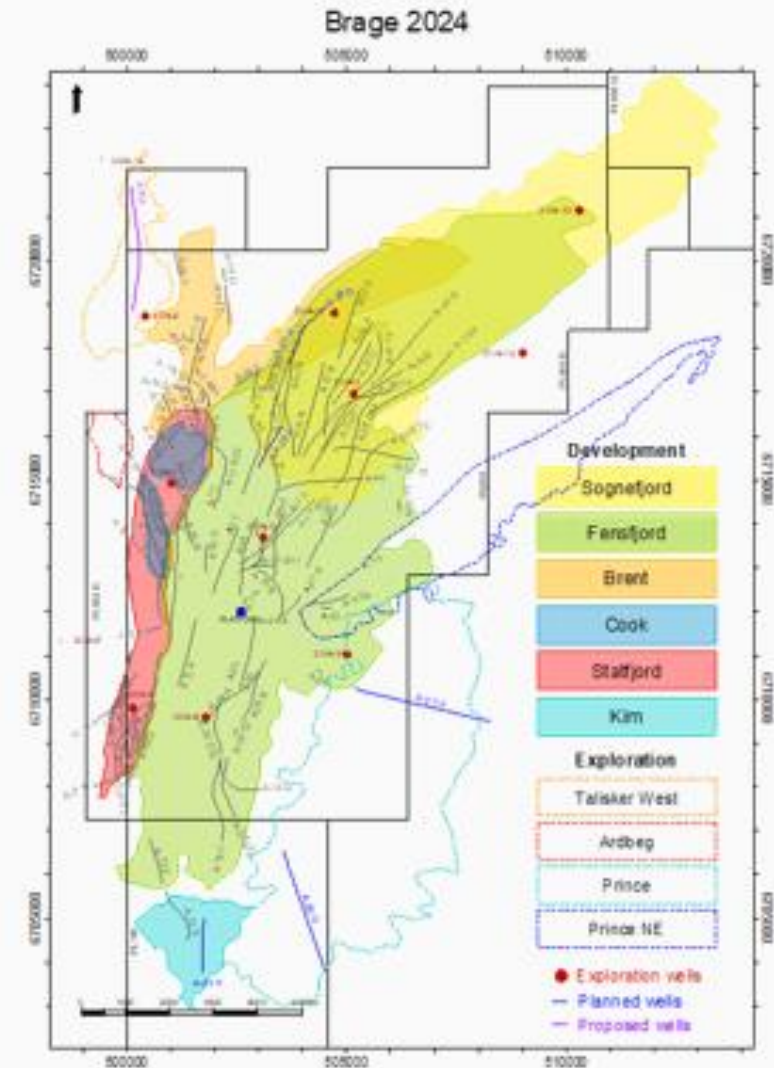
More than doubling production volumes since new strategy launch in 2021



Brage platform



- Brage platform: Steel jacket @135 m
- Well capacity: 40 platform slots
- Production start-up: September 1993
- Drilling facility
 - Conventional equipment
 - Designed for 5500 m drilling depth
- Reservoirs in production
 - Statfjord – original PDO (1988)
 - Fensfjord – original PDO (1988)
 - Sognefjord – Exempt PDO (2005)
 - Brent - (2012)
 - Cook - Exempt PDO (2023)
 - Shetland - Test production planned in 2025



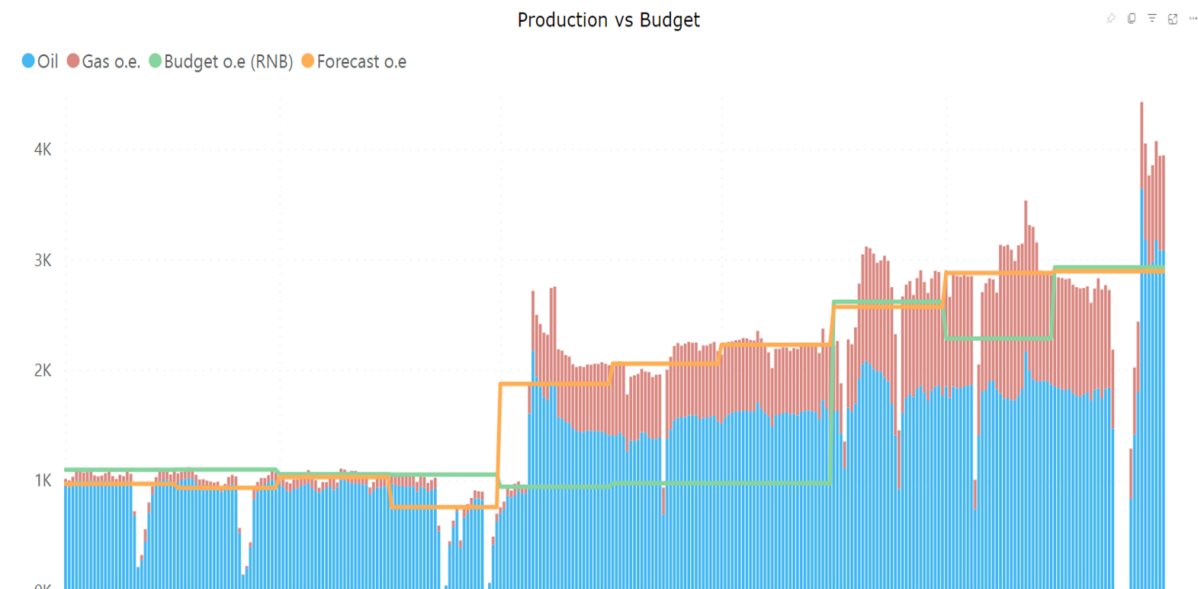
Drilling – key to a continued future for Brage

Extending lifetime

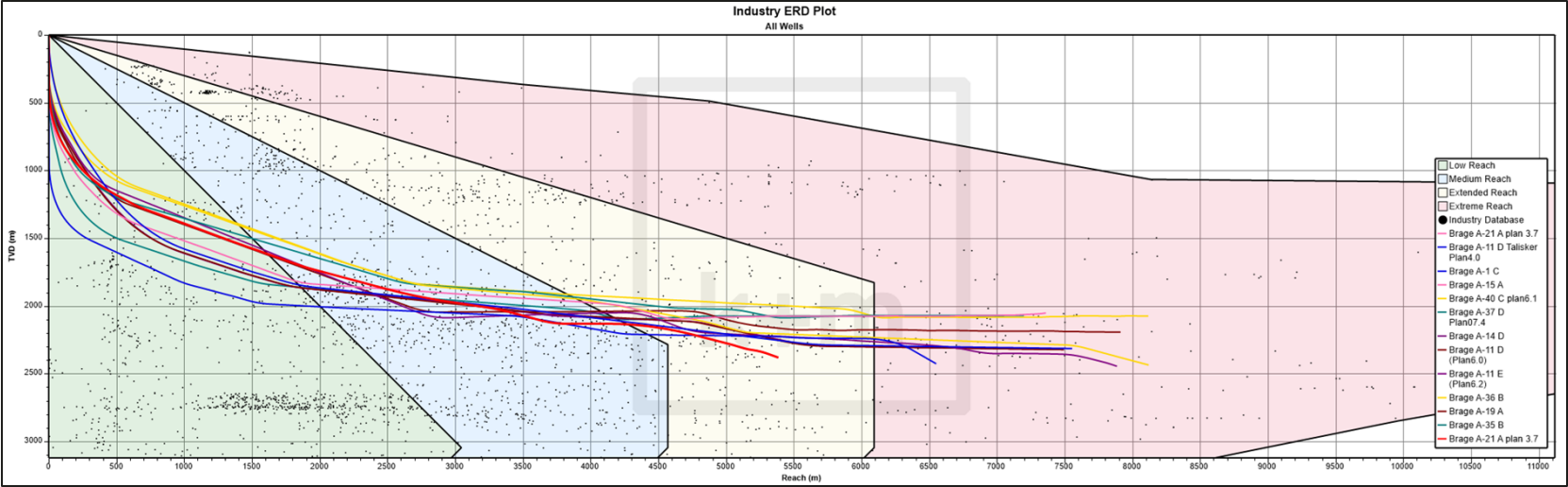


**9000 meter lang brønn
forlenger levetiden på Brage-
feltet**

Brage Oil and Gas Export



Brage wells – stepping out into the extreme



Wells exceeding 9000 m MD on NCS (from total 5881 wells)

Rank	Well	Operator	Field	Year	mMD	Drilling facility
1	31/2-D-6 BY3H	Equinor Energy AS	TROLL	2023	10200	TRANSCOCEAN ENDURANCE
2	31/3-S-23 CY3H	Equinor Energy AS	TROLL	2021	10042	TRANSCOCEAN ENDURANCE
3	31/4-A-23 G	OKEA ASA	BRAGE	2025	10023	BRAGE
4	31/2-P-14 DY2H	Equinor Energy AS	TROLL	2022	10014	TRANSCOCEAN EQUINOX
5	30/9-B-47	Equinor Energy AS	OSEBERG	2004	10007	OSEBERG B
6	31/3-S-23 CY2H	Equinor Energy AS	TROLL	2021	10003	TRANSCOCEAN ENDURANCE
7	31/5-I-21 DY1H	Equinor Energy AS	TROLL	2022	9929	TRANSCOCEAN ENDURANCE
8	34/10-A-32 C	Equinor Energy AS	GULLFAKS SØR	2008	9910	GULLFAKS A
9	31/2-P-14 DY1H	Equinor Energy AS	TROLL	2021	9698	TRANSCOCEAN EQUINOX
10	31/2-D-1 CY3H	Equinor Energy AS	TROLL	2022	9686	TRANSCOCEAN ENDURANCE
11	15/9-A-14 A	Equinor Energy AS	SLEIPNER ØST	2008	9661	SLEIPNER A
12	31/2-D-1 CY2H	Equinor Energy AS	TROLL	2022	9392	TRANSCOCEAN ENDURANCE
13	31/3-S-23 CY1H	Equinor Energy AS	TROLL	2021	9374	TRANSCOCEAN ENDURANCE
14	30/6-C-26 A	Equinor Energy AS	OSEBERG	1995	9327	OSEBERG C
15	31/2-L-24 EY2H	Equinor Energy AS	TROLL	2021	9299	TRANSCOCEAN EQUINOX
16	31/4-A-40 C	OKEA ASA	BRAGE	2023	9247	BRAGE
17	31/2-L-24 EY3H	Equinor Energy AS	TROLL	2021	9168	TRANSCOCEAN EQUINOX
18	31/2-L-24 EY1H	Equinor Energy AS	TROLL	2021	9109	TRANSCOCEAN EQUINOX
19	34/8-A-6 AH	Equinor Energy AS	VISUND	2005	9082	VISUND
20	31/4-A-13 E	OKEA ASA	BRAGE	2023	9050	BRAGE
21	31/4-A-36 B	Wintershall Norge AS	BRAGE	2019	9023	BRAGE
22	31/2-M-13 BY3H	Equinor Energy AS	TROLL	2021	9022	TRANSCOCEAN ENDURANCE

ERD competence in Brage D&W

- Experienced planning and operational teams with long Brage history
- Step-by-step learning from A-13, A-40, A-23 and further
- Team experience from NCS ERD projects
- Service company experience
- ERD training of personnel with K&M
- 3 additional wells planned 10.500+ m in 2025

➤ **OKEA D&W One Team Performance Commitment**

- Build on our successes & continue to deliver as a team

One Team

- We meet each other with respect and a positive attitude
- We build trust through open and honest communication
- We include contractors as a part of our team
- We collaborate and give constructive and positive feedback
- We celebrate our successes and have fun

Performance

- We aim high and set ambitious targets
- We invest resources in robust planning
- We always deliver to promises
- We take ownership to own and joint results
- We continuously improve and develop as a team

Living our values will make us succeed

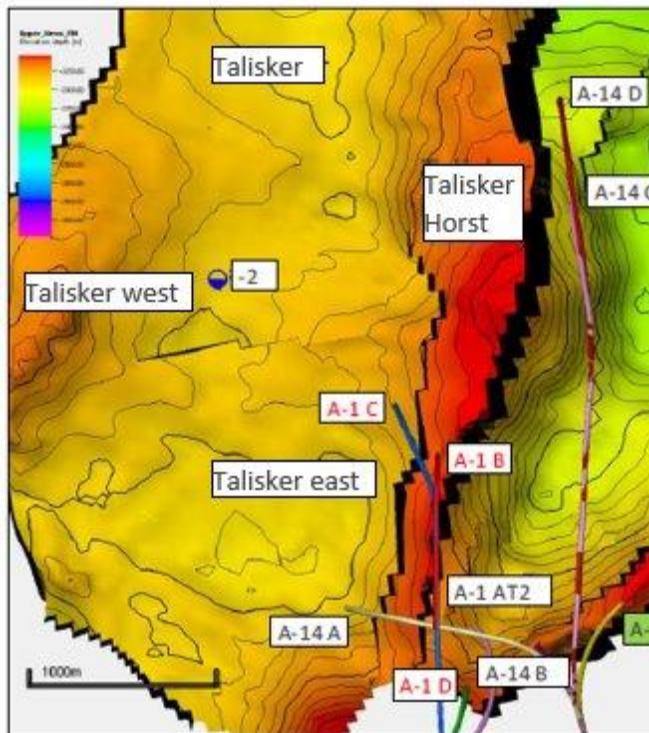
OPEN – ENGAGED – RESPONSIBLE – AMBITIOUS



Smart Piloting Strategy –

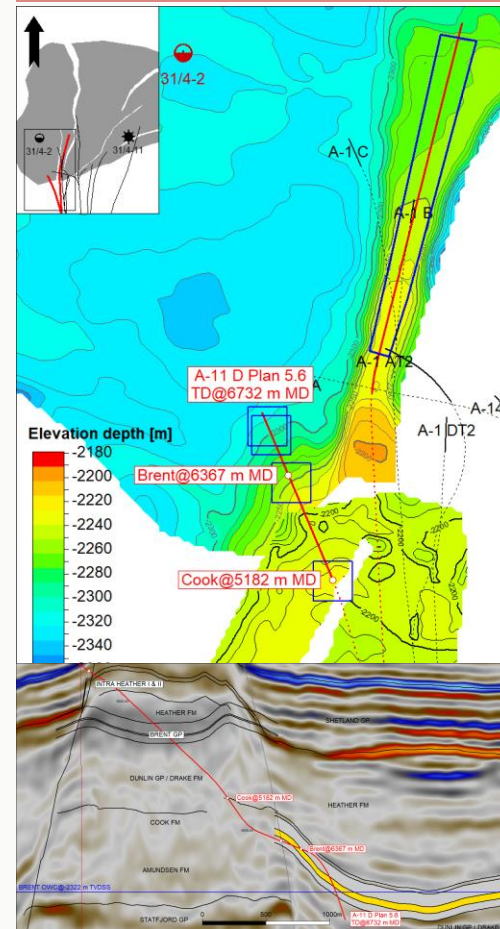
Talisker East Reservoir

Pilot from A-1 DT2 producer



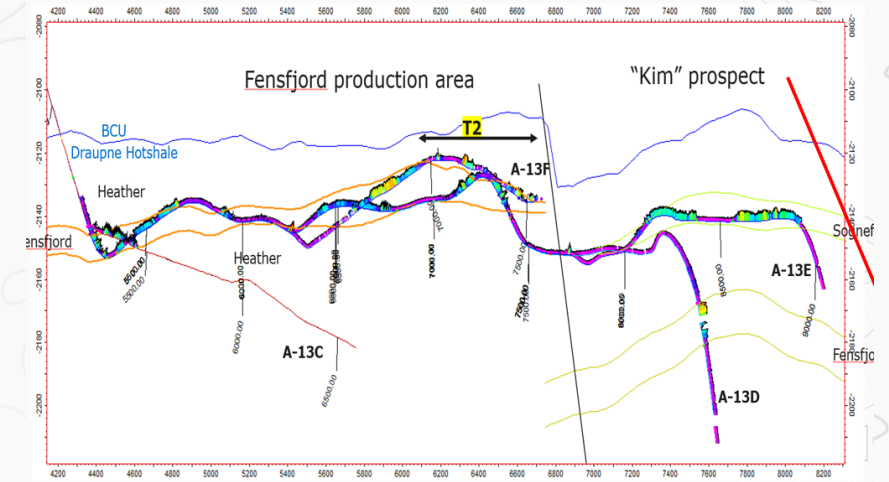
Cook North Reservoir

Pilot from A-11 E Producer



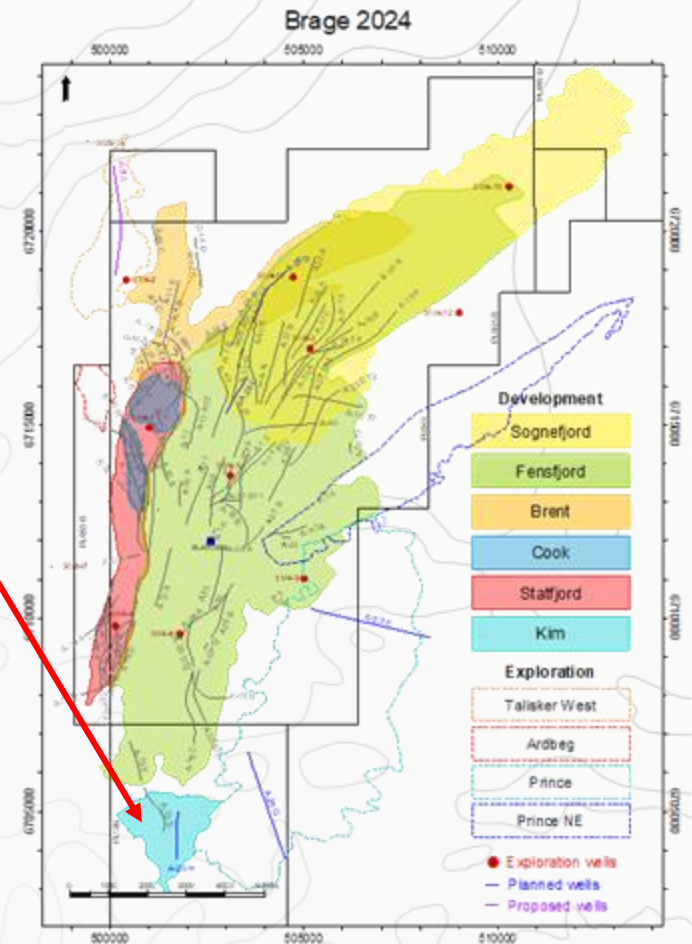
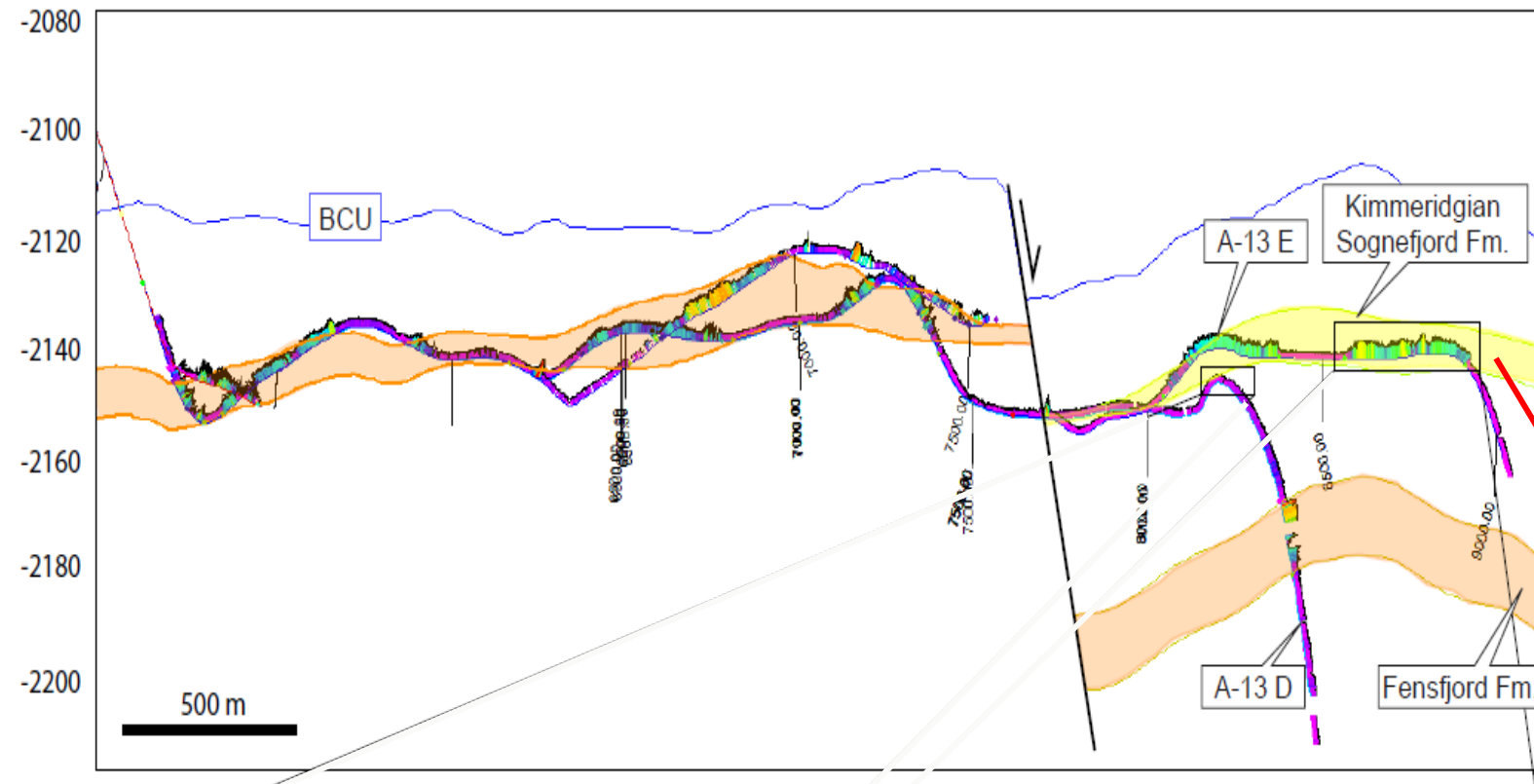
Kim Discovery

Pilot from A-13 F producer



Over 60% of production coming from new discovered areas

Agile and Adaptable Operation

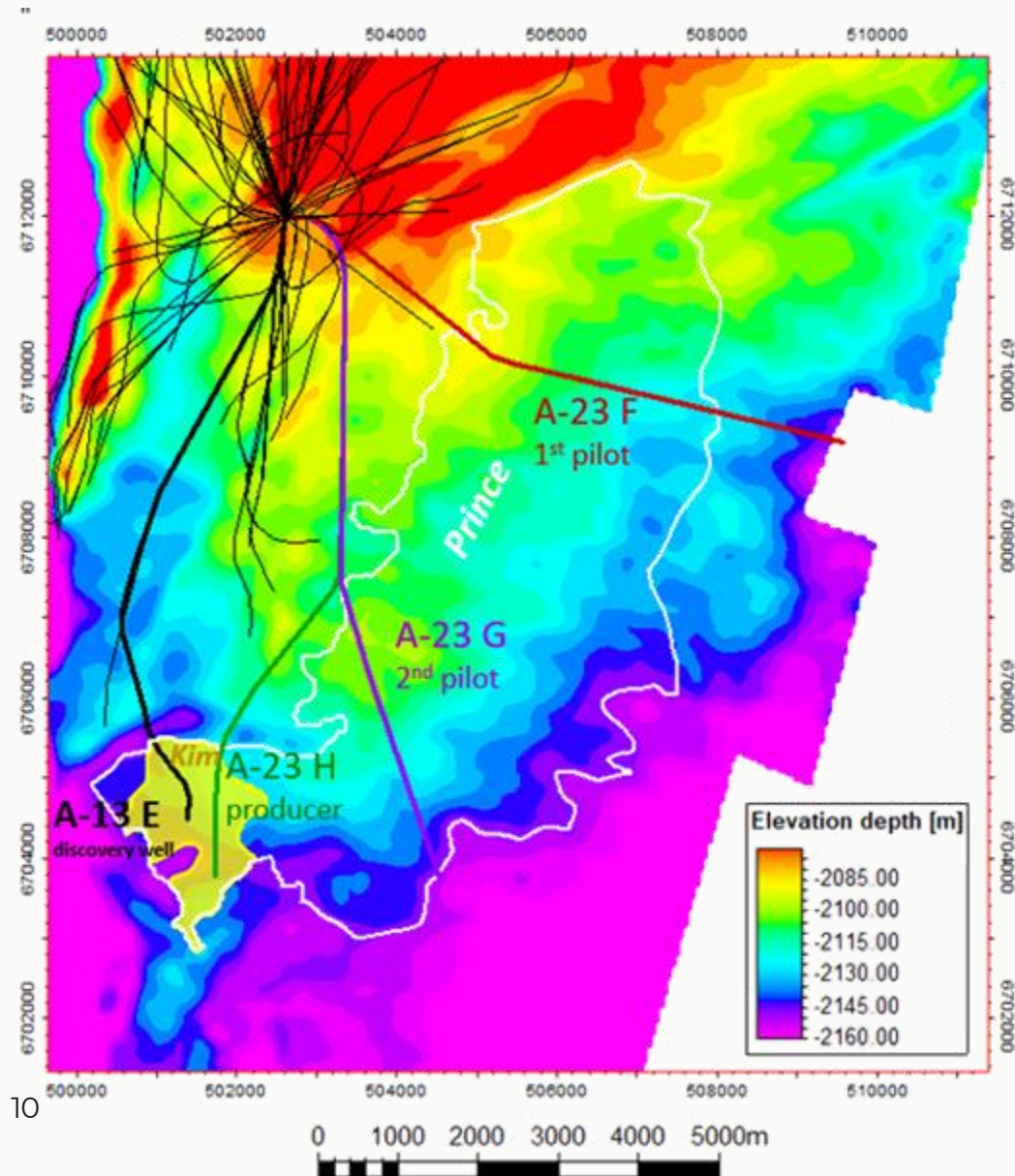


A-13 D: Production well in Fensfjord with exploration pilot to Kim prospect

A-13 E: Open hole sidetrack: Investigate high resistivity feature observed on Geosphere in A-13D

A-13 F: Open hole sidetrack: Redrill Target T2 in A-13D

Brage Further Development – Sognefjord East Appraisal



- A-23 F: Exploration pilot well
- A-23 G: Exploration pilot well
- A-23 H: Kim oil producer well
- Start of drilling operation in Q3 2024



Thanks to...

OKEA



Petrolia Noco