



Seismisk undersøkelse – planlegging og utførelse

Odd Martin Rørstad – Vessel Manager CGG

Passion for Geoscience



Innhold

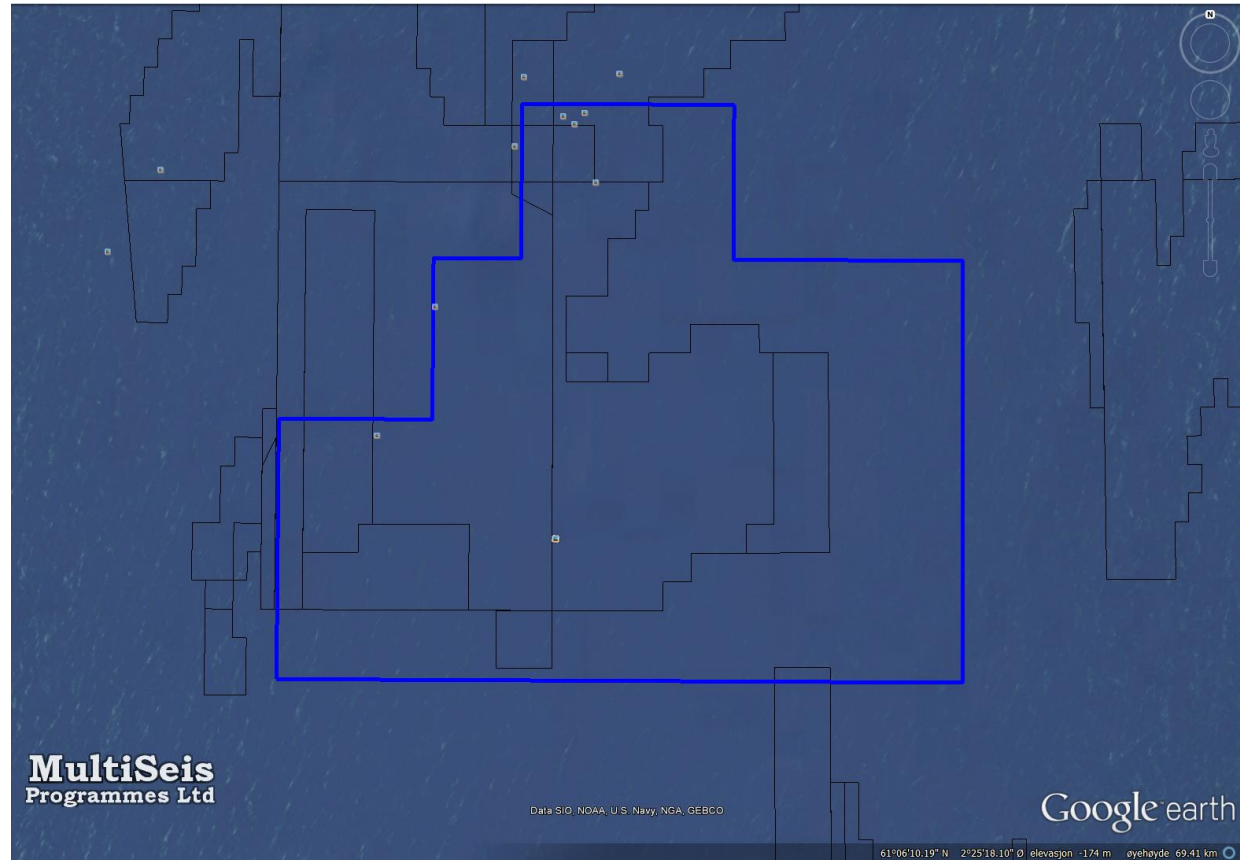
- Planlegging :
 - Pre-plot av surveylinjer
 - Utstyr i sjøen
 - Plot av seilt rute
 - Safe Navigation Area

- Eksempel på navigasjons-begrensninger



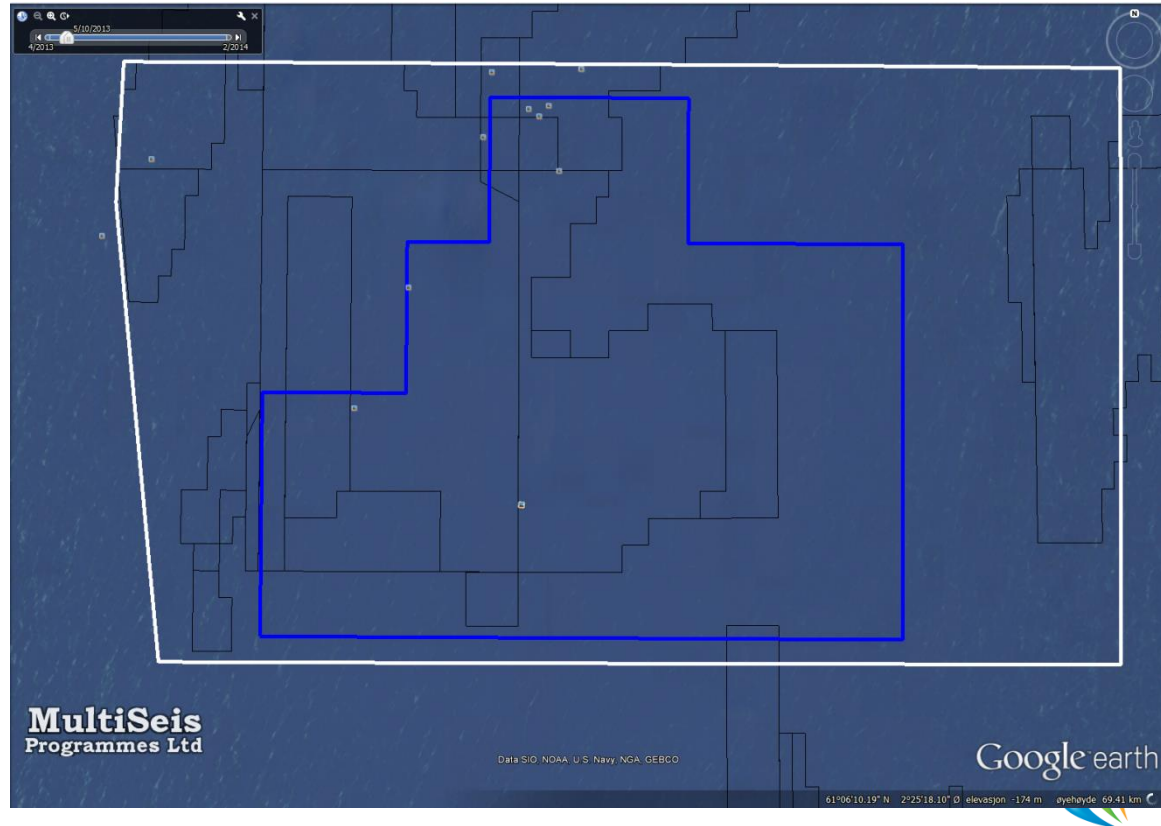
Planlegging : Pre-plot og Safe Navigation Area

Full Fold Polygon



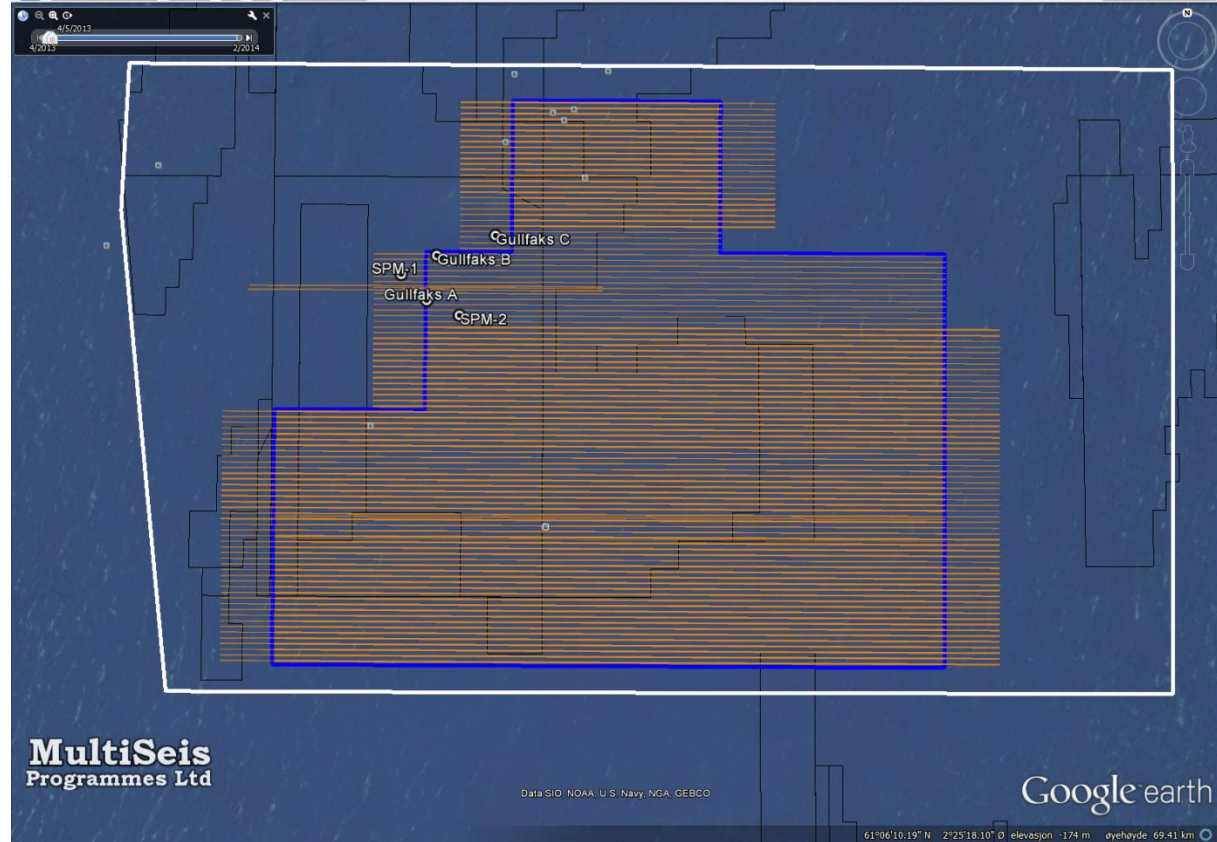
Planlegging : Pre-plot og Safe Navigation Area

Innmeldt brutto område



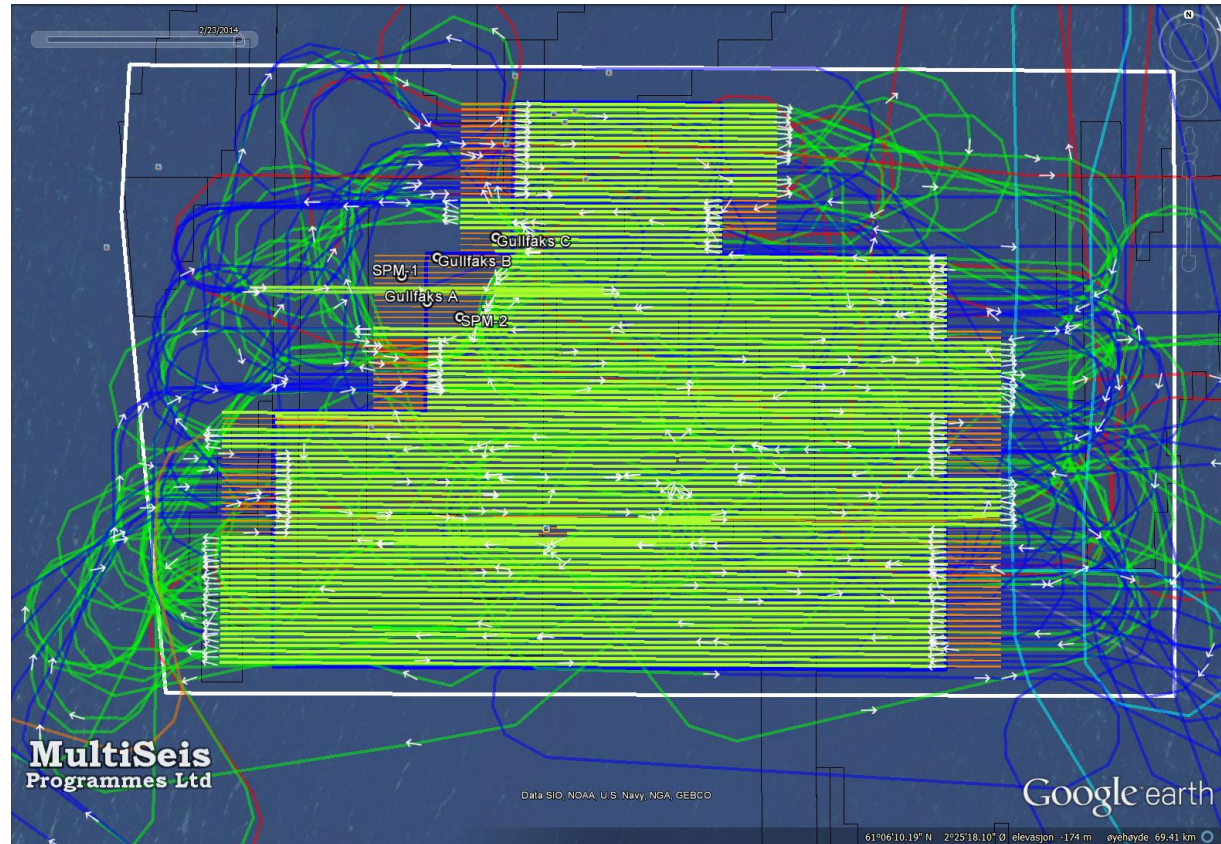
Planlegging : Pre-plot og Safe Navigation Area

Område hvor kanonene fyres



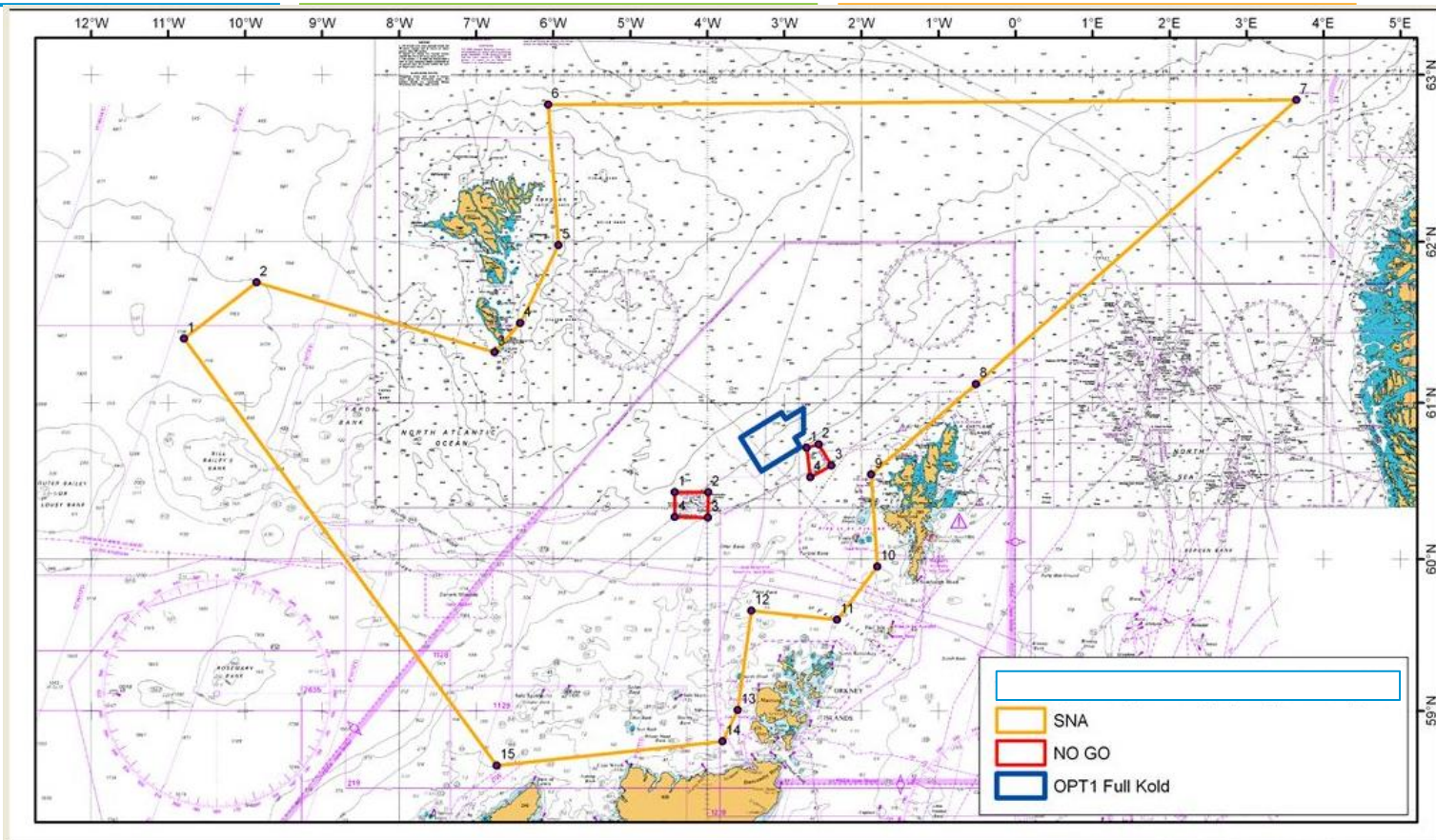
Planlegging : Pre-plot og Safe Navigation Area

Sporlogg seismisk skip



Planlegging : Pre-plot og Safe Navigation Area

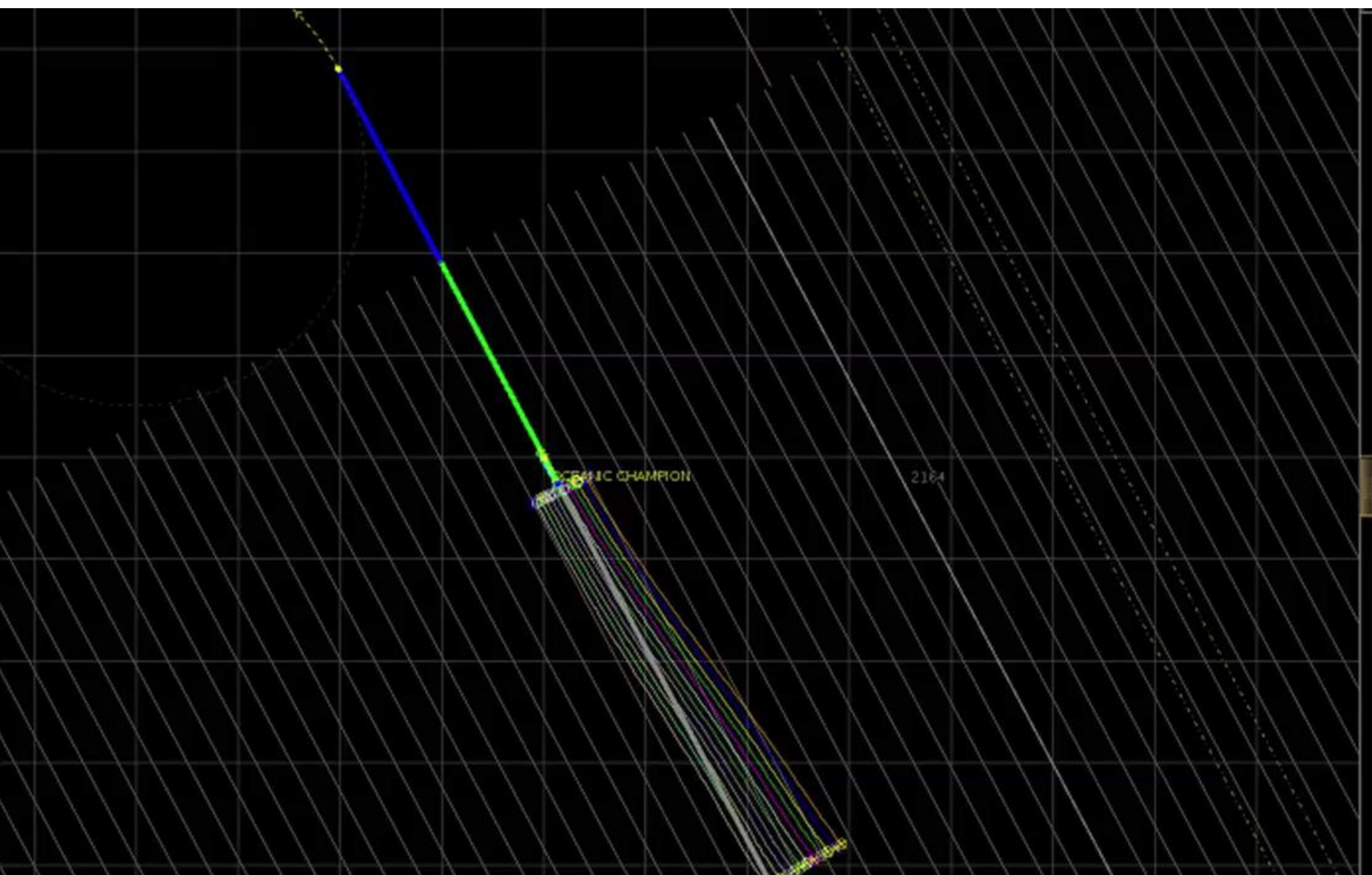
Safe Navigation Area
Innenfor områder
nærmest survey:
EIA (Miljørapport)
Installasjoner
Planlagt arbeid –
Grøfting, Rørledning,
Drilling, Skipstrafikk
Fiskerivirksomhet,
SIMOPS



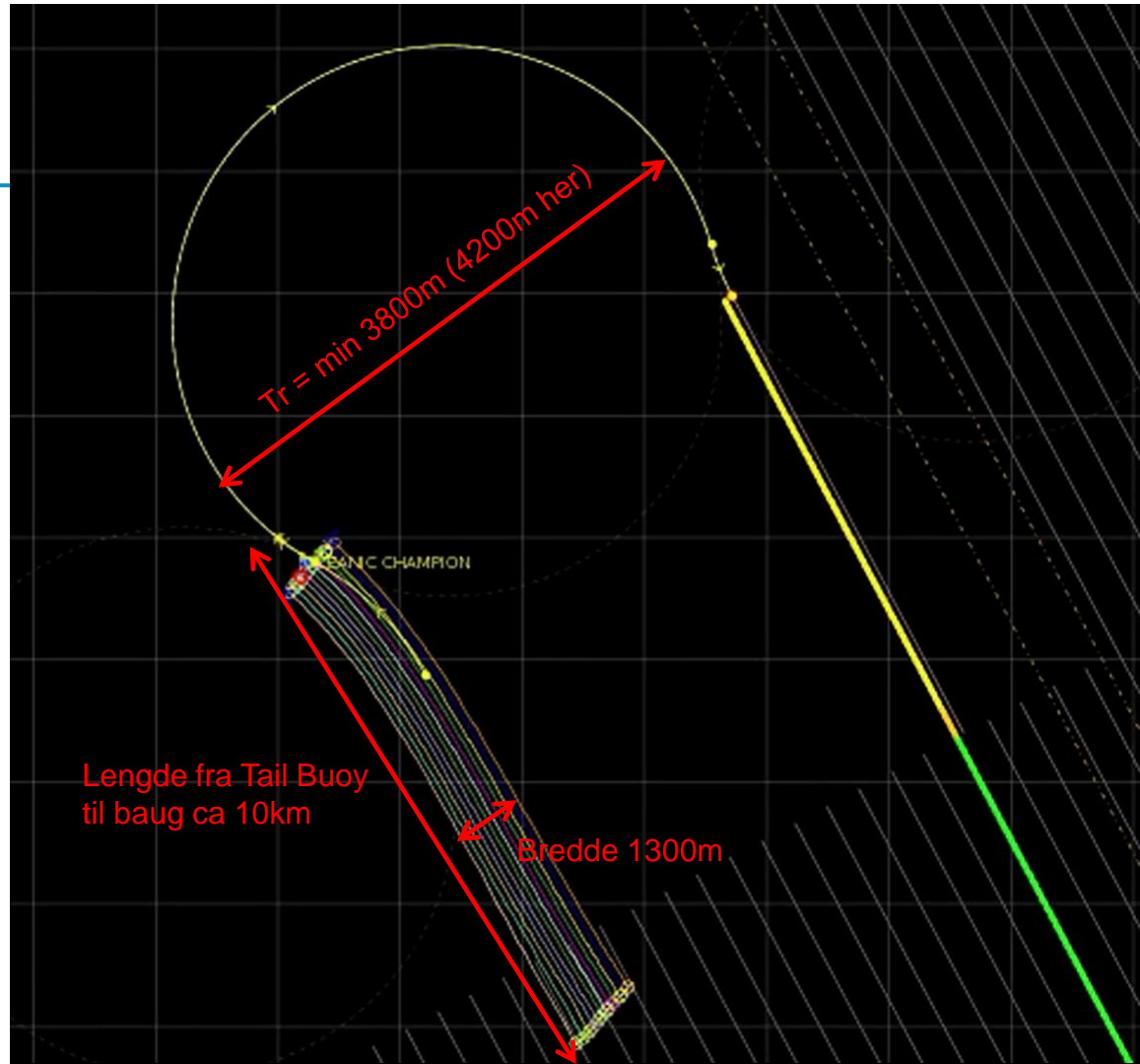
- CHP
- Backgrounds
- Survey Lines
- Obstacles



8000.0m
6000.0m
4000.0m
2000.0m
0.0m
-2000.0m
-4000.0m
-6000.0m
-8000.0m



Turning Radius



Turning Radius



Utseilt distanse i tørn = 12-13000m



V= 4.4knop – ca. 8km/t

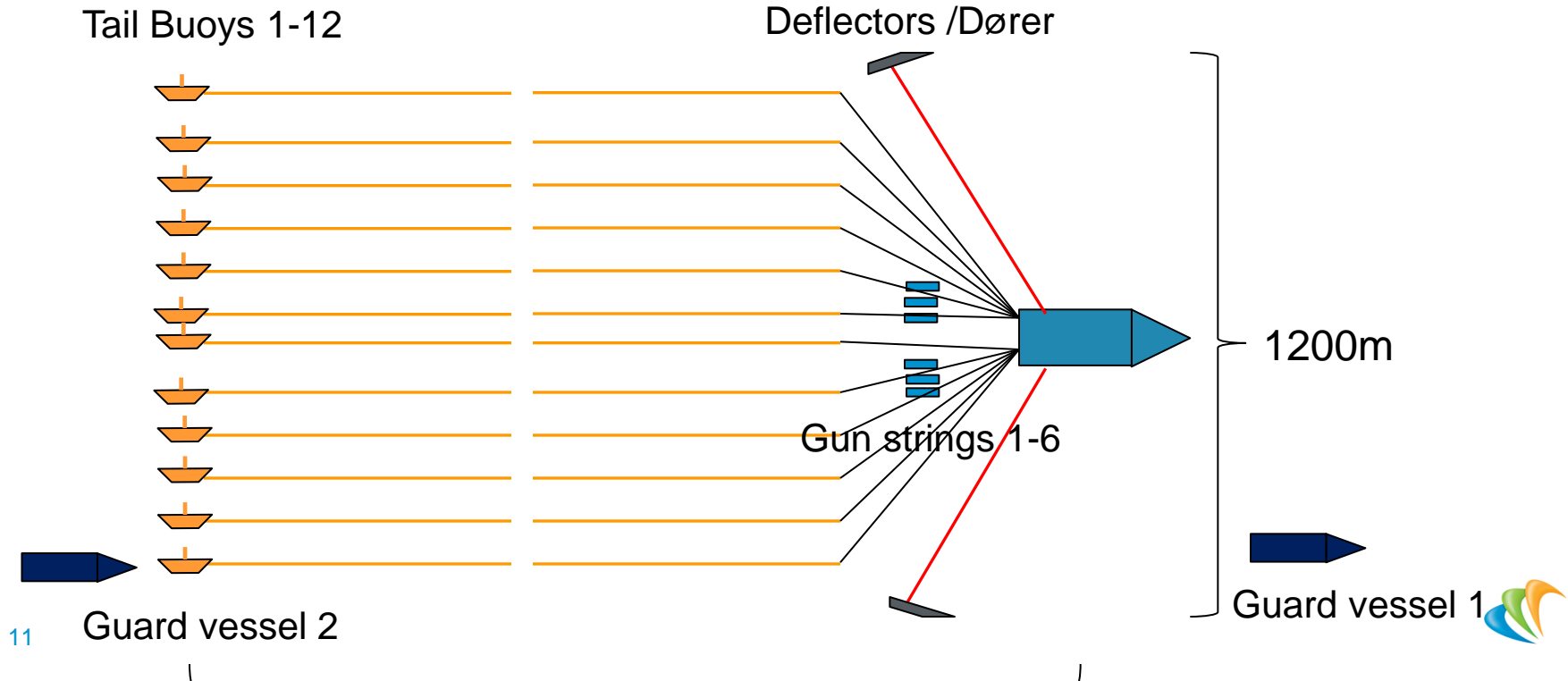
1.5-2t /180 deg turn

1.5°-2° /min

Hastighet 3,5-5Nm

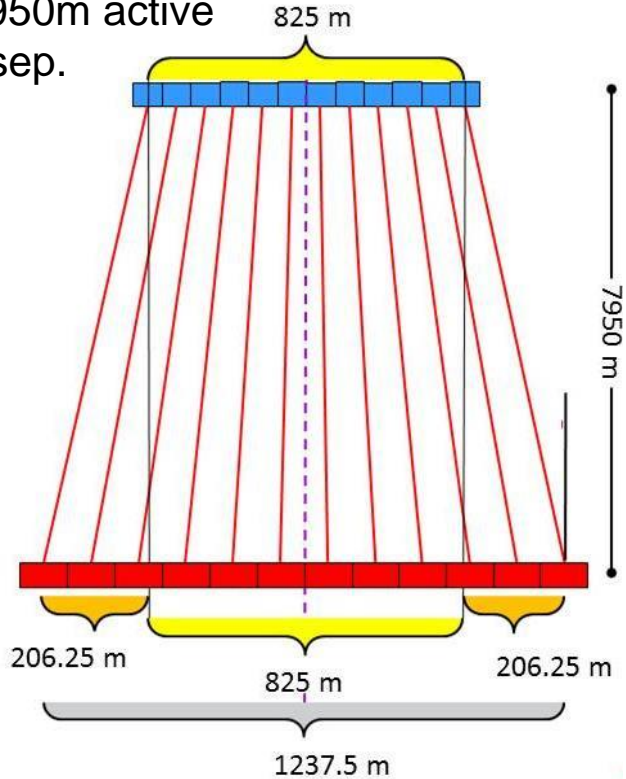


Dagram seismisk båt med følgefartøy

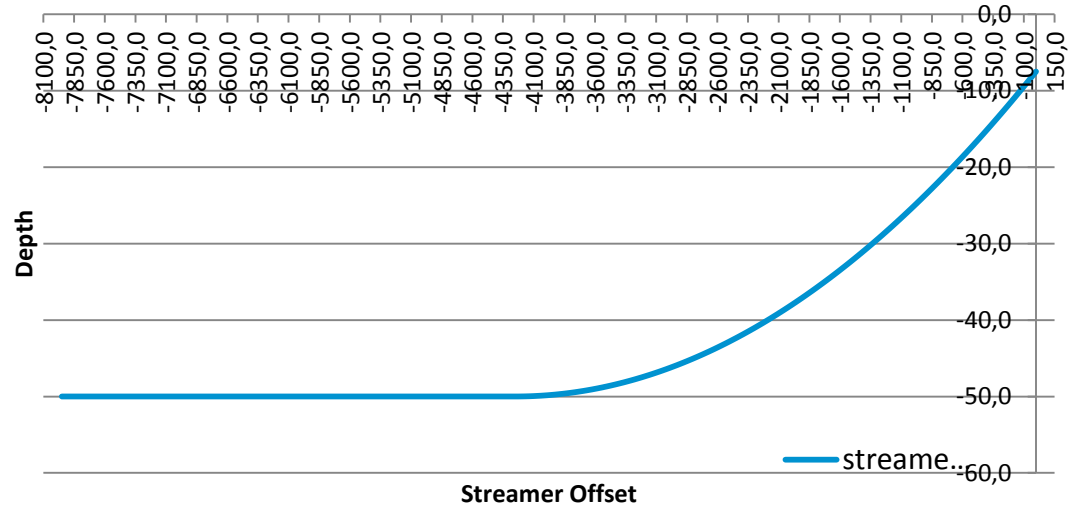


Streamer profile

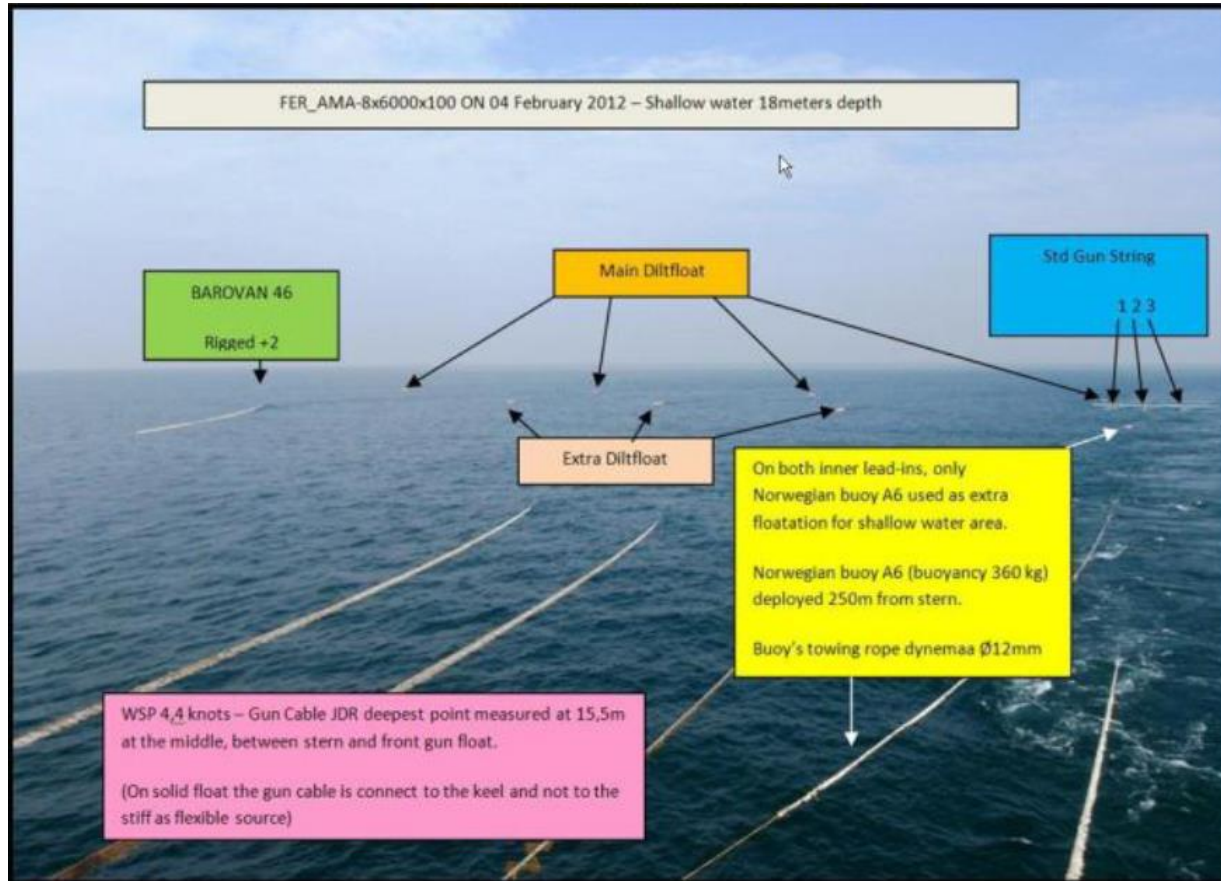
12x7950m active
75m sep.



BroadSeis Depth Offsets



Tauet utstyr





Oceanic Champion – 14streamer configuration

